



NetLine/Crew



Fast-track your crew management process

Crew costs are among the major cost drivers for airlines. Managing your crew management process efficiently will exploit your saving potential to the maximum. The fully integrated NetLine/Crew solution covers all phases of crew management and therefore allows airlines to reduce operating costs, enhance crew productivity and respond quickly to operational changes.

Product line

NetLine is one of the world's leading software solutions for the airline industry. This integrated, modular product line provides optimal support for the entire process of planning and controlling airline resources.

NetLine products:

- NetLine/Market
The market analysis solution
- NetLine/Plan
The network planning solution
- NetLine/Sched
The schedule management solution
- NetLine/Crew
The crew management solution
- NetLine/Ops ++
The operations control solution
- NetLine/Load
The weight & balance solution

Boost your crew productivity and crew manager efficiency

Crew management is a highly complex task. The generation and daily management of legal, profitable, feasible and robust crew rosters requires full integration, highly automated processes and decision support for all phases of the crew management process. On the crew side, honoring preferences, fair duty plans and efficient communication significantly improve crew loyalty. As a result your entire crew management process will gain speed immediately.

> Improve stability, flexibility and crew loyalty

- Improve operational stability and flexibility throughout the complete lifecycle with the full integration of all modules
- Utilize your crew resources more efficiently by employing powerful short-, mid- and long-term planning tools

- Increase crew satisfaction by honoring their requests/preferences and communicating efficiently

> Benefit from optimum duty plans and quick recovery

- Improve situational awareness with early pro-active detection and warning (Management by Exception)
- Accelerate your recovery from operational changes with powerful decision support and process automation
- Always ensure safety and compliance in planning and operation through real-time warning and alerting

> Decrease your crew costs by up to 10%

- Increase crew utilization by up to 0.5% through improved pairing and roster planning resources
- Proven track record of delivering 5-15% savings of total hotel costs



Pairing
Assignment
Tracking
Manpower Planning
Vacation Planning
FatigueRisk-Management
CPEM
Reporting
CrewLink
Pairing xOPT
Preference Planner
Fairness xOPT
Preferences xOPT

Features and functions

NetLine/Crew takes over all phases of crew management and allows the flexible combination of various modules. It supports various business models and the pairing/non-pairing-based planning processes.

A flexible rule engine checks and informs immediately about violations. Comprehensive filtering and sorting functions ensure fast data access and execution of actions. Powerful macros speed up routine processes significantly.

NetLine/Crew provides a set of semi-/fully automatic decision support functions. The user can focus on the efficient use of crew resources, while creating and managing legal, compliant and crew-oriented duty rosters.

NetLine/Crew is highly integrated with all other NetLine products.

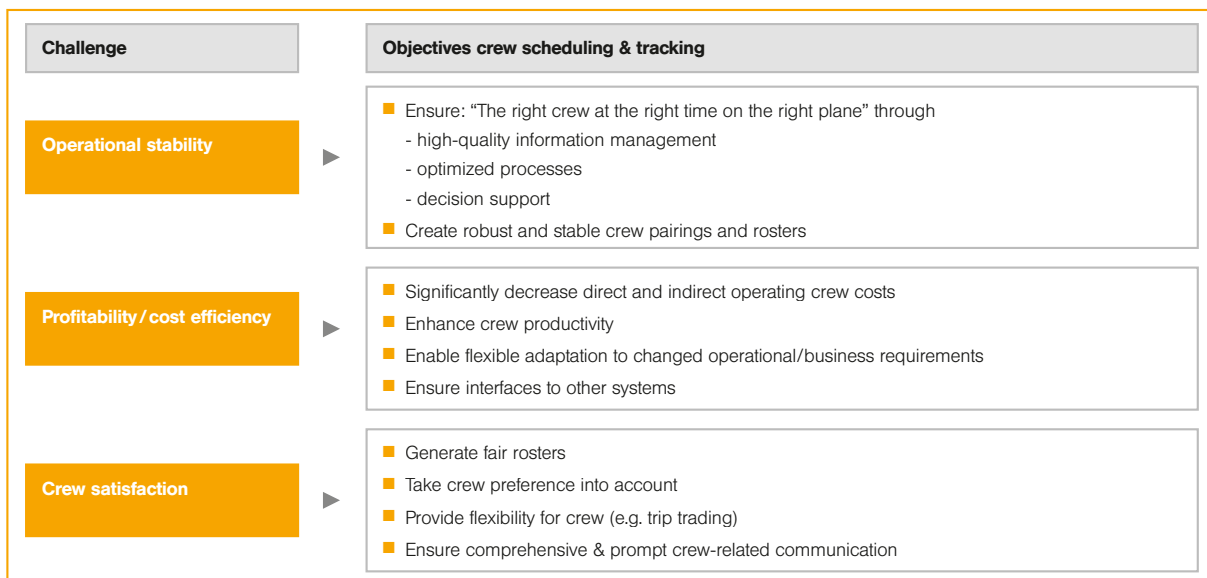
NetLine/Crew comes with fully integrated add-on modules that can be combined individually.

NetLine/Crew Pairing

creates savings in manpower and logistics (hotel, deadhead, etc.) costs by facilitating pairing planning and maintenance. Powerful functions allow the creation of pairing solutions. A Scenario Management allows cost-evaluation offering optimum flexibility.

NetLine/Crew Assignment

supports the highly automated generation of optimum duty plans considering all regulations and administrative processes. Requested duties and other pre-assignments are distributed using efficient system support. Training management includes initial and upgrade as well as recurrent training. Multiple roster solutions allow different roster scenarios for further evaluation.



Crew management is a balancing act: supporting operational stability, while staying cost-efficient and keeping crews satisfied.



NetLine/Ops ++ NetLine/Load

NetLine/Crew Tracking

helps to pro-actively manage your crew operations. It allows efficient day-to-day operational control (“Management of Exception”) as well as solving unpredictable flight schedule disruptions with powerful decision support. A high-end Logistics Desk automatically manages hotel accommodation requirements and hotel basic data. The Tracking module also provides real-time notification handling. All actions are immediately checked for consistency and legality and various other check items.

NetLine/Crew Manpower Planning

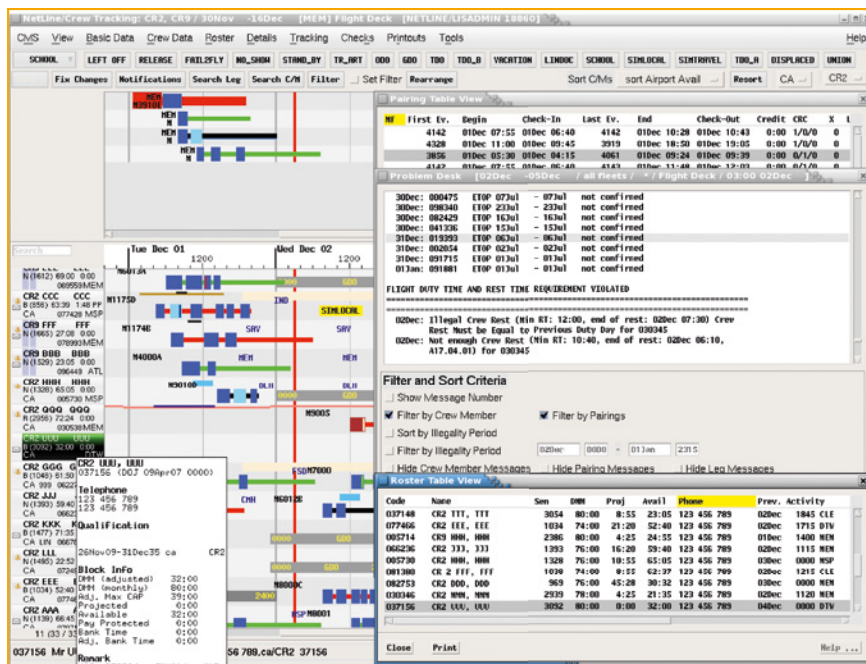
enables you to determine crew requirements and availability based on existing data and forecasts. Basic crew requirement formulas for long-term, seasonal, and mid-term planning are covered as well as effects of vacation requests, and training requirements. An integrated scenario management allows commercial and operational evaluations.

NetLine/Crew Vacation Planning

covers all phases from bidding and awarding to tracking of vacations, while providing a set of decision support tools. The result is efficient, legal, and crew-oriented vacation plans. Crew members are provided with an interactive calendar for interaction with the system within the NetLine/Crew CrewLink module.

NetLine/Crew Fatigue Risk Management

provides support by efficiently managing fatigue of airline crews. The module is highly integrated into the product to achieve fast response time, in pairing construction throughout assignment until day of operation; for both manual planning



Screenshot of NetLine/Crew

and optimization. It predicts fatigue and the associated risks for each flight crew, visualizes them and supports operational decisions.

NetLine/Crew Crew Profitability Evaluation Model (CPEM)

provides the user with cost approximations for pairing or roster solutions. A dedicated comparison functionality allows the evaluation of different scenarios against each other. It supports the calculation not only of crew-related costs, but also of revenues and key performance indicators.

NetLine/Crew Reporting

provides optimum transparency of your entire crew process through dynamic reporting options. Based on the NetLine/Crew data model the collected data helps to analyze your crew

performance in order to detect areas of improvement and take actions.

NetLine/Crew CrewLink

facilitates crew communication, thus enhancing crew satisfaction. The web-based access for crew members supports various business areas, such as notification distribution, monitoring crew check-in/out, etc. It allows crew members easy access to the duty plan or trip information.

NetLine/Crew Optimizer Suite

NetLine/Crew Pairing xOPT provides fully automated creation of cost-efficient, robust, and legal pairing solutions. Using pairing optimization minimizes manpower demand, crew transports, etc. for the subsequent rosters.

NetLine/Crew *PreferencePlanner* has a significant impact on crew satisfaction. It provides seniority-based automated support for the pre-planning of concrete preferences.

NetLine/Crew *Fairness xOPT* automates and optimizes your crew rostering using a fair distribution philosophy. It automatically creates complete, balanced, stable, and legal roster solutions – considering all pre-assignments and minimizing the number of night stops, etc. to an optimum.

NetLine/Crew *Preferences xOPT* improves crew loyalty. Based on the fair distribution philosophy, individual crew preferences are additionally considered. The crew manager can flexibly mix different granting philosophies, such as seniority and/or number of previous fulfilled bids in published rosters.

System requirements

- Client OS:
Windows XP SP3; Windows 2003;
Windows Vista; Windows 7; Windows 8
- LAN clients using a PC X Server (WRQ Reflection or Hummingbird Exceed for Windows clients or the respective X Server for UNIX workstation clients)
- WAN clients using a data centralization solution (Oracle Secure Global Desktop or Citrix Presentation Server)
- UNIX server (AIX, LINUX)
- JBoss Application Server
- Oracle Database

Are you interested in fast tracking your crew management – by achieving more productivity, efficiency and significant savings? Then contact us – we would love to explain it to you!

Integrated Operations Control Center Platform

This solution is a component of the Integrated Operations Control Center Platform (IOCC).

It is the first fully-integrated IT platform able to control and monitor all aspects of airline operations, including schedule management, operations control, crew management, flight planning and weight & balance. Because of the synergies the IOCC Platform generates, it offers airlines much greater economic benefits than stand-alone systems. Learn more about our platform and visit us at www.IOCC.LHsystems.com.

Components of the IOCC Platform:

 **IOCC/Sched**

 **IOCC/Ops ++**

 **IOCC/Crew**


 **IOCC/Flight**

 **IOCC/Load**