



Lido/APM

Monitor the performance of your fleet

Benefits

- > Monitor the performance of your entire fleet
- > Access actual performance data via web interface at anytime
- > Minimize contingency fuel
- > Extend your aircraft lifecycle by monitoring engine performance
- > Verify the impact of blended winglets as well as engine overhauls

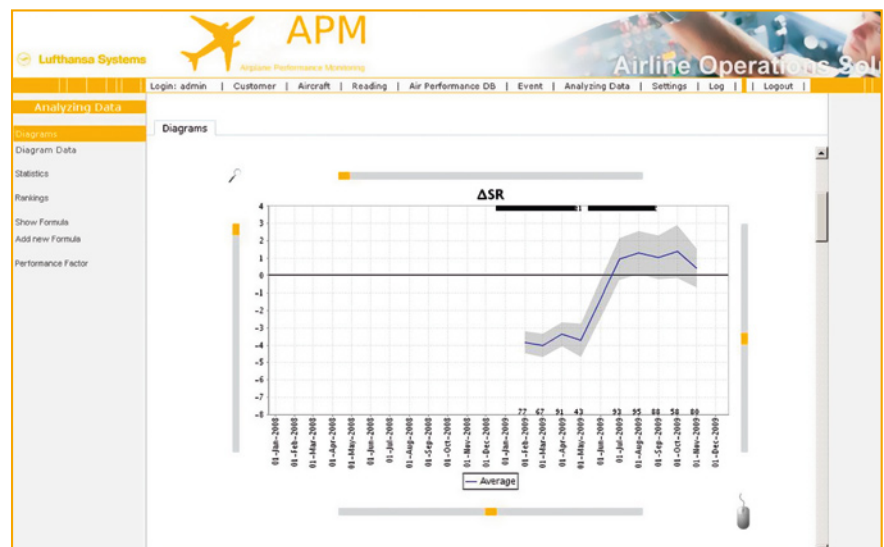
The efficiency of a flight depends heavily on an exact fuel calculation. You know best that the actual fuel consumption often differs from the average data stated by the manufacturer. This margin offers considerable potential for optimization. To monitor the actual correction factor of each aircraft on an individual basis airlines worldwide rely on our Airplane Performance Monitoring solution Lido/APM.

The performance correction factor expresses the margin between the actual and the stated performance figures for each aircraft. Based on this factor and relevant regulatory requirements, the dispatcher can precisely determine the total amount of fuel for the flight. To evaluate these individual performance correction factors, the performance data of each individual aircraft must be monitored during flight and analyzed subsequently.

The Lido/APM solution allows your performance department to accurately monitor the true correction factor of each aircraft in your fleet on an individual basis. Our solution can be used stand-alone or integrated with our flight planning system. The seamless integration with our solution Lido/Flight performs each flight calculation with the most accurate and up-to-date correction factor.

> Lido/FlightOps Suite

Powerful, high-availability IT systems are critical to ensure reliable and efficient flight operations. Our Lido/FlightOps Suite provides airlines with the necessary tools and innovative solutions that enable them to optimize processes, save fuel, and reduce costs.



Graphical displays show the impact of any maintenance activity on the specific range of the airplane (ΔSR) at a glance. In this example, an engine overhaul reduced the deviation from the manufacturer's specification by 3%, while the aerodynamic effects of a new satellite antenna slightly impair the specific ranges.



The web interface of Lido/APM allows easy real-time access to the airline's actual performance data at any time. In this way, your performance and dispatch specialists can provide your flight crew with the very latest data via an intuitive and easy-to-use graphical user interface. By using Lido/APM, airlines are able to monitor the current performance data and to analyze them using methods and processes of their individual choice.

Evaluating the individual performance correction factor

The Lido/APM service enables your airline to minimize fuel carried within the framework of FAA and JAA regulations. The authorities allow an airline to operate based on the individual aircraft-specific performance correction factors. But this means that it is mandatory for each single aircraft in the fleet to be monitored continuously. Lido/APM provides this monitoring for your airline. With our Lido/APM, your current performance-monitoring program will be enriched in terms of achieving a more efficient process. In addition, our solution takes all regulatory standards into account

at the same time. Through this compliance, your contingency fuel requirements can be dramatically reduced. This is especially valuable for airlines flying a high frequency of ETOPS routes, where contingency fuel also can be reduced. A gratifying and valuable side effect on top of fuel cost savings: The emission output of your fleet will also be decreased, offsetting some of the proposed tax regulations.

Saving fuel with blended winglets

Enhancing aircraft with blended winglets can improve performance with regard to fuel consumption. By monitoring the individual performance data of your aircraft over a period of time, it will be easy for your experts to assess the impact of blended winglets for each single aircraft. Through monitoring, the expected savings can be verified and documented.

Fleet management

Beyond fulfilling regulatory requirements and minimizing fuel burn, Lido/APM provides airlines with more flexibility in their daily operations. Engines showing atypical performance developments can

be identified earlier and scheduled for on-wing maintenance or shop visits before they become an issue or begin to burn too much fuel.

Management reports using visuals make Lido/APM even more valuable for strategic planning purposes. Fleet management is becoming more flexible in assigning aircraft to certain routes according to their special performance data characteristics. As an example, aircraft with relatively low fuel burn parameters should be assigned to routes requiring maximum range-payload performance.

Our services

Lufthansa Systems offers Lido/APM with a basic or full-service package. With the basic package airlines use Lido/APM via the web interface, loading the data and evaluating them by themselves. If airlines opt for the full-service package, our airplane performance experts analyze the data, process them for statistics and calculate the performance correction factors. All you need to use either service is Internet access.